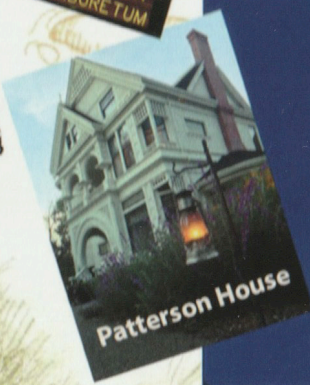
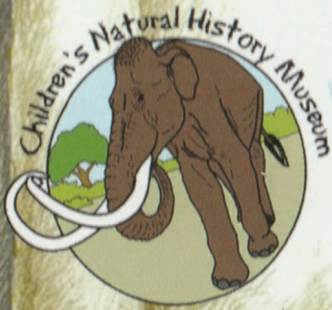
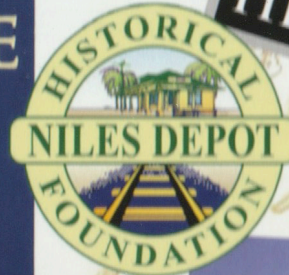


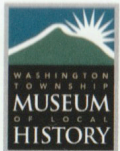
PASSPORT TO ADVENTURE



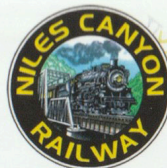
HAVE YOUR PASSPORT PUNCHED
RECEIVE A PERSONALIZED CERTIFICATE

PASSPORT TO ADVENTURE

NAME _____



Washington Township Museum of Local History
190 Anza St., Fremont, CA. museumoflocalhistory.org
Open Mondays, Wednesdays and 2nd Saturday and Sunday of each month, 10:00 a.m. - 4:00 p.m. Discover Tri-City history through time. (510) 623-7907



Niles Canyon Railway ncry.org Operating 1st & 3rd Sundays Feb-Mar, Sept-Oct. Every Sunday Apr-Aug. Train of Lights Nov-Dec. Operating railroad museum between Niles and Sunol on the original segment of 1869 Transcontinental Railroad. 2 boarding locations, Fremont and Sunol. (510) 996-8420



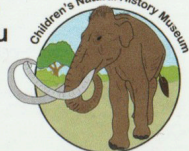
Niles Depot Historical Foundation nilesdepot.org
37592 Niles Blvd., Fremont, CA. Open Sun. 10:00 a.m. - 4:00 p.m. Circa 1901 passenger depot (moved twice) & circa 1873 freight depot located in the Niles District of Fremont. Many interesting museum artifacts along with TCSME HO & N scale model railroad layouts.



Niles Essanay Silent Film Museum nilesfilmmuseum.org
37417 Niles Blvd., Fremont, CA. Tours Sat-Sun 12-4 pm. Learn more about movie making in the silent film era when Charlie Chaplin shot some films in Niles. See films Sat evenings @ 7 pm in our 100 seat 1913 theater with live music! Visit website for schedules. (510) 494-1411



The Patterson House fremont.gov/pattersonhouse
34600 Ardenwood Blvd., Fremont, CA. Tours Apr thru Dec. A 16 room Victorian era Queen Anne mansion and museum filled with original furnishings. Visit the house at Ardenwood Historic Farm and see the animals and ride the train! (510) 791-4196



Children's Natural History Museum Managed by the Math Science Nucleus cnhm.msnnucleus.org
4074 Eggers Dr., Fremont, CA., Tues-Thurs 2-5 pm, 1st & 3rd Saturdays 1-5 pm and by appointment. Featuring the Ice Age fossils of Fremont & other bones, minerals, and shells. (510) 790-6284



Olive Hyde Art Gallery fremont.gov/OliveHyde
123 Washington Blvd., Fremont, CA. Open 12-5 Thursday-Sunday. Offering the community seven gallery exhibits per yr. Introducing an array of traditional and contemporary art. (510) 791-4357



Shinn Park and Arboretum missionpeakreporter.org
1251 Peralta Blvd., Fremont, CA. Public tours on 1st Wed and 3rd Sun except Dec. or by appointment for docent led tours. School group tours avail. Gardens open 8 am to 30 min. past sunset. (510) 795-0891



Pacific Bus Museum 37974 Shinn St., Fremont, CA
Discover the history of buses and bus companies from CA and the Western U.S. Open Apr-Nov. Enjoy 1 hr. tours with a docent on the 1st Saturday of each month. Group tours available by prior arrangement. info@pacbus.org



Old Mission San Jose missionsanjose.org
43300 Mission Blvd., Fremont, CA. Open Daily 10-5
Founded in 1797 as the 14th of 21 Spanish Missions. Museum features artifacts of the California mission period and Ohlone Indians. (510) 657-1797